



Breathe healthy air

UV-C disinfection upper air ceiling mounted

As part of the Philips UV-C disinfection upper air device series, Philips UV-C disinfection upper air ceiling mounted is designed to be installed on false ceilings for the disinfection of air in a wide range of applications. Optimized for low ceiling heights, the UV-C rays are distributed at device level and above. The beam of UV-C rays is controlled by specific reflectors and the louvre design. This allows for the disinfection of the air in a space, while ensuring that day-to-day business activities can continue underneath the area where the device is active.

Benefits

- Allows quiet disinfection of air while business activity continues underneath the device's level
- Inactivates 99.9% of virus Coliphage ϕ X174 in air within 10 minutes in a room with sufficient air circulation (please refer to "more information URL")
- Uses Philips UV-C lamps and drivers
- Environmentally friendly - no ozone emissions during or after use

Features

- Philips PL-S TUV lamp included: 4x9W
- Shortwave UV radiation peak at 253.7 nm (UV-C)
- Louvres and reflector control the distribution of UV-C at the device level and above, where people are not usually present
- Surface mounted on false ceiling
- Complies with IEC 62471 standard for photobiological safety

Application

- Offices
- Retail
- Food outlets
- Hospitality
- Schools
- Banking
- Washrooms

UV-C disinfection upper air ceiling mounted

Warnings and Safety

- DANGER: Risk Group 3 UV product. Like any disinfection system, UV-C lamps and devices must be installed and used in the correct way. Direct exposure to UV-C can be dangerous and result in a sunburn-like reaction to the skin and serious damage to the cornea.
- As UV-C is invisible to the eye, the UV-C upper air device must be installed together with adequate safeguards to ensure that the UV-C upper air device can be operated in a safe way. The UV-C upper air device are only to be used as components in a system that consists of adequate safety safeguards such as, but not limited to, those indicated in the mounting instructions and/or user manuals.
- Direct exposure to UV-C is dangerous. Philips UV-C luminaires systems must only be sold through qualified partners and installed by professionals according to our stringent safety and legal requirements. Our UV-C products are not meant to be used in applications or activities which may cause and/or lead to death, personal injury and/or damage to the environment.

Versions



UV-C disinfection upper air Ceiling mounted version



UV-C disinfection upper air Ceiling mounted version



UV-C disinfection upper air ceiling mounted

Product details



UV-C upper air CM SM355B-DPP02



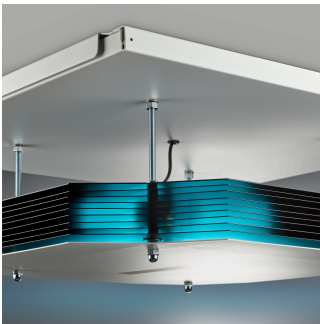
UV-C upper air CM SM355B-DPP03



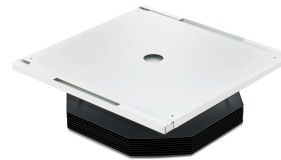
UV-C disinfection upper air suspended version



UV-C disinfection upper air suspended version



UV-C upper air CM SM355C SMB-DPP03



UV-C upper air CM SM355C SMB-DPP02



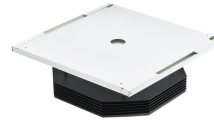
Product Image

UV-C disinfection upper air ceiling mounted

Product details



Product Image



Product Image



Product Image

UV-C disinfection upper air ceiling mounted

Application Conditions

Ambient temperature range	+10 to +40 °C
Suitable for random switching	No

Approval and Application

Mech. impact protection code	IK02
Ingress protection code	IP20

Controls and Dimming

Dimmable	No
----------	----

Operating and Electrical

Inrush current	13 A
Inrush time	0.11 ms
Input Frequency	50 Hz
Input Voltage	230 V

General Information

Cable	-
CE mark	CE mark
Protection class IEC	Safety class I
Connection	Push-in connector 3-pole
ENEC mark	-
Flammability mark	-
Gear	HFM
Glow-wire test	Temperature 650 °C, duration 30 s
Number of gear units	4 units
Number of light sources	4 pcs
Optic type	Lamellae louver
Product Family Code	SM345C
EU RoHS compliant	Yes
Warranty period	1 years

Initial Performance (IEC Compliant)

Power consumption tolerance	+/-10%
Initial input power	38 W

Mechanical and Housing

Color	White and black
Housing Material	Aluminum
Optic material	Aluminum
Reflector material	Aluminum

Operating and Electrical

Order Code	Full Product Name	Power Factor (Min)
910505103001	SM355B 4xTUV PLS 9W HFM	0.66
910505103002	SM355B 4xTUV PLS 9W HFM MR62	0.66
910505103004	SM355P 4x TUV PLS 9W HFM SM4	0.66
919206000091	SM345C 4xTUV PLS 9W HFM SM4	0.64
910505103005	SM355C 4x TUV PLS 9W HFM SMB	0.66
919206000021	SM345C 4xTUV PLS 9W HFM	0.64
919206000081	SM345C 4xTUV PLS 9W HFM MR62	0.64
919206000101	SM345C 4xTUV PLS 9W HFM SMB	0.64

General Information

Order Code	Full Product Name	Number of products on MCB of 16	
		A type B	
910505103001	SM355B 4xTUV PLS 9W HFM	70	
910505103002	SM355B 4xTUV PLS 9W HFM MR62	70	
910505103004	SM355P 4x TUV PLS 9W HFM SM4	70	
919206000091	SM345C 4xTUV PLS 9W HFM SM4	38	

Order Code	Full Product Name	Number of products on MCB of 16	
		A type B	
910505103005	SM355C 4x TUV PLS 9W HFM SMB	70	
919206000021	SM345C 4xTUV PLS 9W HFM	38	
919206000081	SM345C 4xTUV PLS 9W HFM MR62	38	
919206000101	SM345C 4xTUV PLS 9W HFM SMB	38	

UV-C disinfection upper air ceiling mounted

Mechanical and Housing

Order Code	Full Product Name	Overall height
910505103001	SM355B 4xTUV PLS 9W HFM	185 mm
910505103002	SM355B 4xTUV PLS 9W HFM MR62	185 mm
910505103004	SM355P 4x TUV PLS 9W HFM SM4	122 mm
919206000091	SM345C 4xTUV PLS 9W HFM SM4	123 mm

Order Code	Full Product Name	Overall height
910505103005	SM355C 4x TUV PLS 9W HFM SMB	212 mm
919206000021	SM345C 4xTUV PLS 9W HFM	155 mm
919206000081	SM345C 4xTUV PLS 9W HFM MR62	198 mm
919206000101	SM345C 4xTUV PLS 9W HFM SMB	214 mm

UV

Order Code	Full Product Name	UV-C irradiance defined at 20cm	UV-C irradiance defined at 2m	UV-C radiation
910505103001	SM355B 4xTUV PLS 9W HFM	1522 mW/m ²	136 mW/m ²	0.37 W
910505103002	SM355B 4xTUV PLS 9W HFM MR62	1522 mW/m ²	136 mW/m ²	0.37 W
910505103004	SM355P 4x TUV PLS 9W HFM SM4	1522 mW/m ²	136 mW/m ²	0.37 W
919206000091	SM345C 4xTUV PLS 9W HFM SM4	1372 mW/m ²	114 mW/m ²	0.335 W

Order Code	Full Product Name	UV-C irradiance defined at 20cm	UV-C irradiance defined at 2m	UV-C radiation
910505103005	SM355C 4x TUV PLS 9W HFM SMB	1522 mW/m ²	136 mW/m ²	0.37 W
919206000021	SM345C 4xTUV PLS 9W HFM	1372 mW/m ²	114 mW/m ²	0.335 W
919206000081	SM345C 4xTUV PLS 9W HFM MR62	1372 mW/m ²	114 mW/m ²	0.33 W
919206000101	SM345C 4xTUV PLS 9W HFM SMB	1372 mW/m ²	114 mW/m ²	0.335 W

